



## *Carex solandri*

### Common Name(s):

Forest Sedge, Solander's Sedge

### Current Threat Status (2012):

Not Threatened

### Distribution:

Endemic. North, South and Stewart Islands

### Habitat:

Coastal to montane. Usually in riparian forest where it may be the dominant sedge of alluvial terraces, and riversides but also colonising wet seepages and slip scars. Usually found in association with *C. dissita* Boott.

### Features\*:

Dense yellow-green tufts, upper part of leaves and culms drooping. Culms 0.10–1.00 m long, c.1 mm diameter, trigonous, smooth; basal sheaths red-brown, red-purple to black. Leaves < or = culms, 1.5–6.5 mm wide, linear, double-folded, cartilaginous. Inflorescence of 5–10 distant spikes 10–50 mm long, nodding on long filiform peduncles; terminal 1–4 spikes male, slender, usually approximate; remaining spikes female with a few male flowers above or below, 3–4 mm diameter, usually almost black, lowermost spikes often compound; subtending bracts leafy, > inflorescence. Glumes (excluding awn) ± = or < utricles, ovate, lanceolate, entire or rarely emarginate, light or dark brown, membranous, midrib produced to a scabrid awn of varying length. Utricles 2–3 mm long, slightly > 1 mm diameter, plano-convex, unequally biconvex or subtrigonal, fusiform or ovoid, turgid, dark red-brown to almost black, occasionally light brown, pale yellow towards the base, surface smooth, occasionally faintly nerved at the base, shining; scarcely narrowed above to a bidentate beak < 0.5 mm. long, margins smooth or occasionally scabrid, orifice us. scabrid; rarely contracted to a stipe c.0.2 mm. long. Stigmas 3. Nut c.1 mm. long, trigonous, obovoid, cream, surface minutely but deeply pitted giving angles of nut a serrate appearance.

### Flowering:

August - December

### Fruiting:

October - May

### Threats:

Not Threatened

### \*Attribution:

Fact Sheet prepared by P.J. de Lange (10 August 2006). Description adapted from Moore and Edgar (1970)

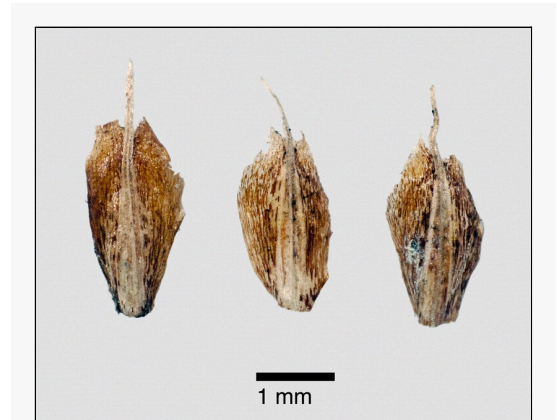
### References and further reading:

Moore, L.B.; Edgar, E. 1970: Flora of New Zealand. Vol. II. Government Printer, Wellington.

Thorsen, M. J.; Dickinson, K. J. M.; Seddon, P. J. 2009. Seed dispersal systems in the New Zealand flora. Perspectives in Plant Ecology, Evolution and Systematics 2009 Vol. 11 No. 4 pp. 285-309

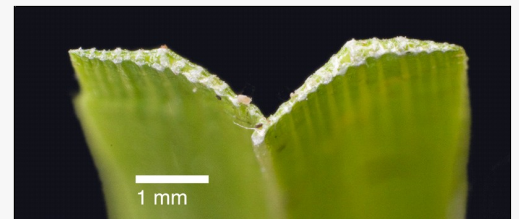
### For more information, visit:

[http://nzpcn.org.nz/flora\\_details.asp?ID=1420](http://nzpcn.org.nz/flora_details.asp?ID=1420)



**Caption:** Glumes. North Cape. Feb 2011.

**Photographer:** Jeremy Rolfe



**Caption:** Transverse section of leaf. North Cape. Feb 2011.

**Photographer:** Jeremy Rolfe