



Adiantum cunninghamii

Common Name(s):

Common maidenhair, Cunninghams maidenhair

Current Threat Status (2012):

Not Threatened

Distribution:

Endemic. Kermadec, Three Kings, North, South, Stewart and Chatham Islands.

Habitat:

Common throughout in coastal and lowland forest, occasionally extending into upper montane forests. Usually found on banks, cliff faces and amongst boulders - especially on limestone, marble, basalt or andesite rocks.

Features*:

Tufted, terrestrial fern. Rhizomes, short- to long-creeping. Stipes and rachises glabrous. Fronds adaxially dark green or glaucescent, abaxially paler, glaucous green, ovate to elliptic. Lamina 100-350 x 50-240 mm, 2-3-pinnate at base, Ultimate segments stalked to one side, oblong, tending to curve acroscopically at apices, upper margins irregularly toothed, lower margins smooth, glabrous. Indusia kidney-shaped, glabrous.

Flowering:

Not applicable - spore producing

Fruiting:

Not applicable - spore producing

Threats:

Not Threatened.

*Attribution:

Fact Sheet Prepared for NZPCN by: P.J. de Lange (June 2005).
Description adapted from Brownsey & Smith-Dodsworth (2000).

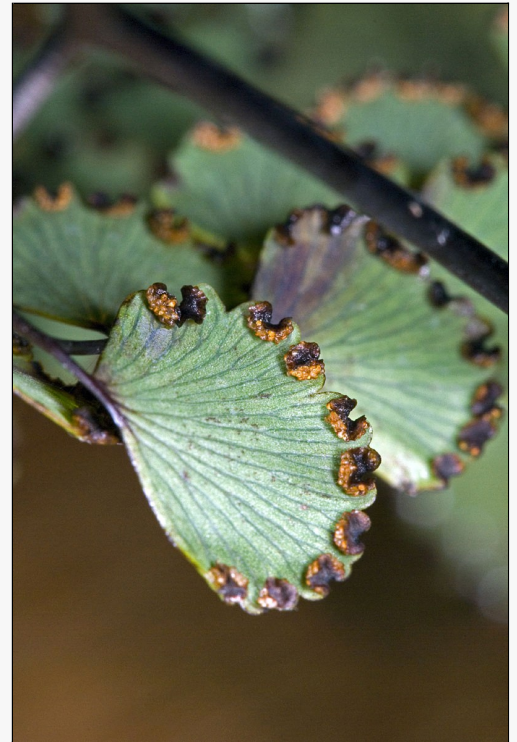
References and further reading:

Brownsey, P.J.; Smith-Dodsworth, J.C. 2000: New Zealand Ferns and Allied Plants. Auckland, David Bateman

Thorsen, M. J.; Dickinson, K. J. M.; Seddon, P. J. 2009. Seed dispersal systems in the New Zealand flora. Perspectives in Plant Ecology, Evolution and Systematics 2009 Vol. 11 No. 4 pp. 285-309

For more information, visit:

http://nzpcn.org.nz/flora_details.asp?ID=1475



Caption: Sori

Photographer: Jeremy Rolfe



Caption: Coromandel

Photographer: John Smith-Dodsworth