



Alopecurus geniculatus

Common Name(s):

kneed foxtail

Current Threat Status (2009):

Exotic

Distribution:

Common throughout.

Habitat:

Wide variety of wetland and aquatic habitats, rare in dry gravelly waste areas.

Features*:

Sprawling grass rooting at the nodes, 15-45 cm tall. Can form floating mats. Stems ascending from knee-like bends at the nodes. Leaf blade 4-12 cm long and 1.5-2.5 mm wide with an acute tip. Ligule (1.5)-2-4.5 mm long, membranous. The flower heads are upright spikes 2-4 cm long comprised of densely crowded conspicuously awned spikelets.

Flowering:

Spring and summer

Fruiting:

Summer to Autumn

***Attribution:**

Factsheet prepared by Paul Champion and Deborah Hofstra (NIWA).

References and further reading:

Edgar E. and H. Connor. 2000. Flora of New Zealand. Volume 5. Manaaki Whenua Press: Lincoln, New Zealand.

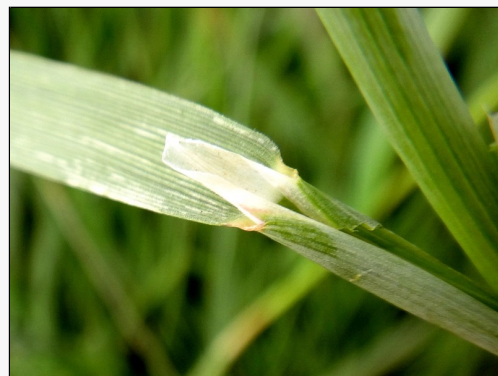
Champion et al (2012). Freshwater Pests of New Zealand. NIWA publication.

<http://www.niwa.co.nz/freshwater-and-estuaries/management-tools/identification-guides-and-factsheets/freshwater-pest-species>

Johnson PN, Brooke PA (1989). Wetland plants in New Zealand. DSIR Field Guide, DSIR Publishing, Wellington. 319pp.

For more information, visit:

http://nzpcn.org.nz/flora_details.asp?ID=2462



Caption: Waituna Lagoon, Southland

Photographer: Jesse Bythell



Caption: Waituna Lagoon, Southland

Photographer: Jesse Bythell