



Juncus acutiflorus

Common Name(s):

sharp-flowered rush

Current Threat Status (2009):

Exotic

Distribution:

Common in Westland, also recorded once from Canterbury and Waikato

Habitat:

Drains and wet pasture.

Features*:

Tall-growing, in loose clumps or in diffuse colonies, sometimes in radiating lines of stems; rhizome stout, far-extending. Stems 30-100 cm high, stiffly erect, without internal transverse septa below inflorescence. Leaves \pm compressed, conspicuously transversely-septate across whole width. Inflorescence 1-12 cm long, open, diffuse and spreading, much-branched with numerous small dark brown clusters of 3-12 flowers at end of branches, secondary branches diverging at an acute angle. Tepals 2-2.5 mm long, lanceolate, long-acuminate, outer < inner, often with recurved tips. Stamens 6. Capsule c. 3 mm long, > tepals, gradually tapering to an acute point, red-brown.

Flowering:

Summer

Fruiting:

Autumn

*Attribution:

Factsheet prepared by Paul Champion and Deborah Hofstra (NIWA). Features description from Healy Edgar (1980).

References and further reading:

Healy, A.J.; Edgar, E. (1980). Flora of New Zealand, Volume III. Adventive Cyperaceous, Petalous and Spathaceous Monocotyledons. Government Printer, Wellington. 220pp.

Johnson PN, Brooke PA (1989). Wetland plants in New Zealand. DSIR Field Guide, DSIR Publishing, Wellington. 319pp.

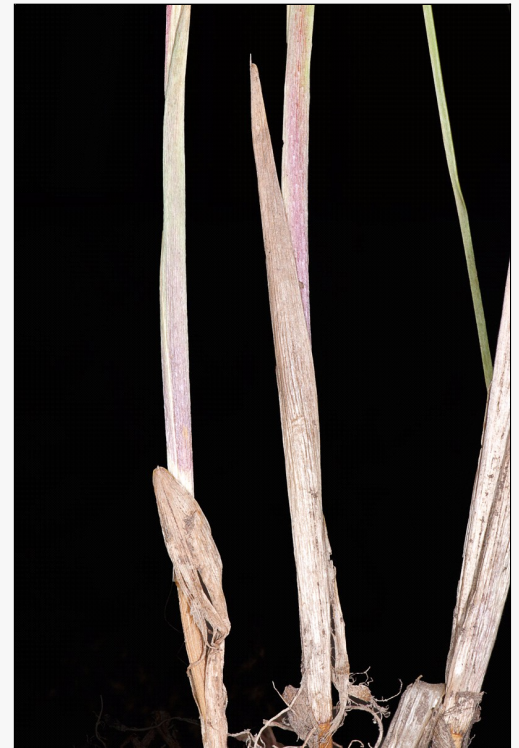
Johnson, A. T. and Smith, H. A (1986). Plant Names Simplified: Their pronunciation, derivation and meaning. Landsman Bookshop Ltd: Buckenhill, UK.

Kirschner, J. (compiler) (2002). Juncaceae 2: *Juncus* subg. *Juncus*, Species Plantarum: Flora of the World Part 7: 1-336.

Healy, A.J. (1982). Identification of weeds and clovers. New Zealand Weed and Pest Control Society Publication. Editorial Services Limited, Featherston. 299pp.

For more information, visit:

http://nzpcn.org.nz/flora_details.asp?ID=4108



Caption: Leaf sheaths. Fensham Reserve, Wairarapa. Feb 2011.

Photographer: Jeremy Rolfe



Caption: Creeping rhizome. Fensham Reserve, Wairarapa, Feb 2011.

Photographer: Jeremy Rolfe