



## *Zoopsis bicruris*

### Common Name(s):

liverwort

### Current Threat Status (2009):

Range Restricted

### Distribution:

Endemic. South Island, West Coast, Stockton Plateau, Te Kuha Ridge, Paparoa National Park, Mt Te Kinga, Mt Brown

### Features\*:

Diocous, creeping, much-branched, glossy yellow-green matted plants. Shoots 8-10 x 0.41-0.45 mm, apex acute. Stems broad, flat, plano- to biconvex, 0.38-0.40 mm wide. Cells of dorsal surface in two rows, 210-250 x 130-150 x 158-168 microns. Ventral surface cells in 4 rows, central 2 with cells 47-88 x 40-70 x 35-43 microns; outer 2, 95-100 x 53-68 x 40-58 microns. Cells of central strand 9, thin-walled 18-65 x 18-28 microns. Leaves distant, bifid; leaf lobes unicellular, 42-88 x 26-41 microns, ovoid, without oil bodies or chloroplasts. Underleaves vestigial, bifid. Oil bodies of stem cells absent or 1-2 per cell, 6 microns diam., spherical, granular, pale grey. Oil bodies of leaf lobes 6-10 per cell, 5-7 microns diam., spherical, granular. Androecia unknown. Gynoecia on ventral branch 0.5 mm long. Perianth cylindrical 1.4 x 0.41 mm, with 13 teeth, 100-150 microns long. Seta 1.6 mm. Capsule 0.54 x 0.30 mm, in 2 concave segments 0.6 x 0.45 mm, 20 microns thick. Spores 13-14 microns diam. Elaters 100-200 x 9-12 microns.

### Fruiting:

October

### Threats:

Recently (2006) described and so undoubtedly undercollected and poorly known. Indications are that it may be better rated Sparse

### \*Attribution:

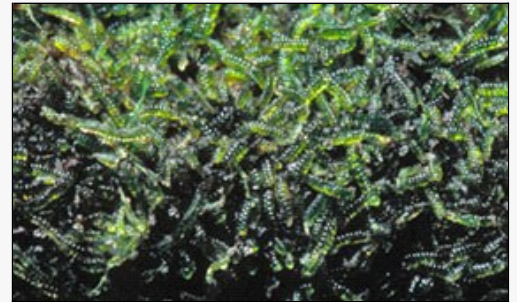
Fact Sheet Prepared for NZPCN by: P.J. de Lange (5 October 2007). Description adapted from Renner et al (2006)

### References and further reading:

Renner, M.A.M.; Brown, E.A.; Glenny D.S. 2006: Two new *Zoopsis* species and their relationships to other zoopsids (Jungermanniopsida: Lepidoziaceae). *Journal of Bryology* 28: 331-344.

### For more information, visit:

[http://nzpcn.org.nz/flora\\_details.asp?ID=5083](http://nzpcn.org.nz/flora_details.asp?ID=5083)



**Caption:** Stockton Plateau.

**Photographer:** John Braggins



**Caption:** Stockton Plateau.

**Photographer:** John Braggins