



Carex raoulii

Common Name(s):

Coastal forest sedge, Raoul's sedge

Current Threat Status (2012):

Not Threatened

Distribution:

Endemic. North and South Islands. Exact distribution uncertain.

Habitat:

Sedge of coastal and lowland shrublands.

Features*:

Densely tufted, tussock-forming, dark-yellow green/wine-red sedge. Culms 50-90cm × 0.5-1mm, 3-angled (trigonus), scabrid below inflorescence, greatly elongating at maturity, sometimes 3 m long. Basal sheaths dark grey-brown. Leaves < culms 2-4 mm wide, double-folded, soft, grassy, margins finely scabrid.

Inflorescence of 5-7 unstalked, closely, clustered 1-4 cm x 4-7 mm spikes, arranged at top of culm, proximal portion of terminal spike female, basally male, remaining spikes all female. Glumes (excluding awn) = or < utricles, very broadly ovate, apex often cleft, membranous, colourless with few small red brown lines, pale cream midrib extending beyond to form finely scabrid awn.

Utricles 2-3 × 1.5 mm, Plano-convex, elliptic-obovoid, light reddish brown, usually with distinct pale brown nerves, slightly winged, usually scabrid on margins, and on both surfaces of upper half.

Beak 0.5-1 mm long, bifid, orifice finely scabrid. Stigmas 2. Nut c.1.5 mm, biconvex, obovoid, light to dark brown.

Flowering:

No information available

Fruiting:

No information available

Threats:

Because of frequent confusion with the somewhat similar *Carex* 'raotest' the exact distribution and status of *Carex raoulii* is unclear. It is certainly less common than indicated by Flora 2, which included the very common *C.* 'raotest' within *C. raoulii*. Present indications are that *C. raoulii* might be rather uncommon.

*Attribution:

Fact Sheet prepared by P.J. de Lange (10 August 2006). Description adapted from Moore and Edgar (1970)

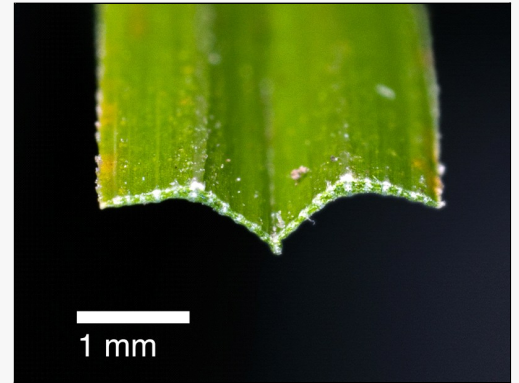
References and further reading:

Moore, L.B.; Edgar, E. 1970: Flora of New Zealand. Vol. II. Government Printer, Wellington.

Thorsen, M. J.; Dickinson, K. J. M.; Seddon, P. J. 2009. Seed dispersal systems in the New Zealand flora. Perspectives in Plant Ecology, Evolution and Systematics 2009 Vol. 11 No. 4 pp. 285-309

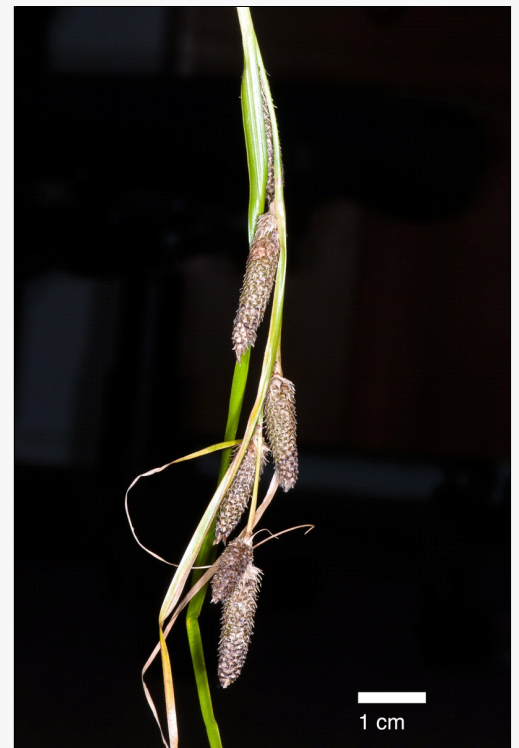
For more information, visit:

http://nzpcn.org.nz/flora_details.asp?ID=737



Caption: Transverse section of leaf. Palliser Bay. Feb 2011.

Photographer: Jeremy Rolfe



Caption: Spikelets. Palliser Bay. Feb 2011.

Photographer: Jeremy Rolfe