

INDIGENOUS VASCULAR PLANTS OF KAUAERANGA VALLEY, AND IN
THE VICINITY OF THAMES, COROMANDEL RANGE, S.L. TO 2745 FT

A.P. Druce, Botany Division, D.S.I.R., 1971 (revised Nov. 1974, July 1975, July 1976, April 1977, May 1977)

[Based on visits 1967, 1971, 1972, 1974, 1977, 1990; and on the publications of Kirk 1870 (T.N.Z.I. 2, 89-100), Adams 1884 (T.N.Z.I. 16, 385-93), and others]

Highest peaks: Table Mountain, grid ref. N49 156373 alt. 2745 ft

The Pinnacles, grid ref. N 49 212370, alt. 2605 ft

→ Hihi, grid ref. N149 198319, alt. 2357 ft

Motutapere, grid ref. N 49, alt. 2685 ft

Kaitarakilii, grid ref. N 49, alt. 2740 ft

K - recorded by Kirk, A - recorded by Adams (not seen by A.P.D.)

GYMNOSPERM TREES

Agathis australis

Dacrycarpus dactyloides

Dacrydium cupressinum

Halocarpus kirkii

Lagarostrobos colensoi

Lepidothamnus intermedius

Libocedrus bidwillii

L. plumosa

Phyllocladus glaucus

P. trichomanoides s.s.

Podocarpus hallii

P. totara s.s.

Prumnopitys ferruginea

P. taxifolia

C. australis X *C. banksii*

C. banksii X *C. pumilio*

Rhopalostylis sapida

DICOT. TREES

Alectryon excelsus var. *excelsus*

Aristotelia serrata

Ascarina lucida var. *lucida*

Avicennia marina var. *resinifera*

Beilschmiedia tatariti

B. tawa

Carpodetus serratus

Cotynocarpus laevigatus

Dodonaea viscosa var.

Dracopis latifolium (incl. *D. matthewsii*)

D. traversii (incl. *D. pyramidale*)

Dysoxylum spectabile

Elaeocarpus dentatus (incl. *E. d. var. dobovianus*)

E. hockleyanus (K)

Eutelia arborea (K)

MONOCOT TREES AND SHRUBS

Cordyline australis

C. banksii

C. indivisa

C. pumilio

Fuchsia excorticata
Griselinia littoralis
G. lucida
Hedycarya arborea
Holbertia populnea (K, A)
Ixerba brexioides
Knightia excelsa
Laurelia novae-zelandiae
Litsea calicatis
Lophomyrtus bullata
Macropiper excelsum var. *excelsum*
Melicope ternata (K)
Melicytus lanceolatus (incl. *M. l.* var. *latior*)
M. ramiflorus ssp. *ramiflorus*
Metrosideros excelsa
M. robusta
M. umbellata
Mida salicifolia (incl. *M. s.* var. *myrtifolia*)
Myoporum laetum (K)
Myrsine australis
M. salicina
Nestegis cunninghamii (K as *Olea cunninghamii*)
N. lanceolata
N. montana (A and Cheeseman 1925 as *Olea montana*)
Nothofagus menziesii (A as *Fagus menziesii*)
N. truncata

Pennantia corymbosa (A)

Pittosporum crassifolium (K)

P. eugenioides

P. tenuifolium ssp. *tenuifolium*

P. t. ssp. (*P. huttonianum*)

P. t. ssp. *tenuifolium* \rightleftharpoons ssp. (*P. huttonianum*)

P. umbellatum

Pseudopanax arboreus var. *arboreus*

P. colensoi s.s.

P. crassifolius

P. discolor

P. edgerleyi

P. laetus

P. lessonii (K as *Panax lessonii*)

P. simplex (incl. *P. s.* var. *sinclairii*)

P. arboreus x *P. crassifolius* (?)

P. crassifolius x *P. lessonii*

Quintinia serrata (incl. *Q. acutifolia* and *Q. elliptica*)

Schefflera digitata

Sophora microphylla

Streblus heterophyllus

Syzygium maitre

Toronia toru

Vitex lucens

Weinmannia racemosa var. (*W. silvicola*)

DICOT SHRUBS

Alseuosmia macrophylla

A. Xquercifolia (K as *A. quercifolia*)

Archiera racemosa

Brachyglottis kirkii s.s.

B. myrtanthos

B. repanda s.s.

B. sp. (*B. kirkii* var. *angustior*)

Carmichaelia cunninghamii
(incl. *C. aligera*)

Clianthus puniceus (Cheeseman 1925)
Coprosma arborea

C. colensoi s.s.

C. dodonaeifolia (incl. *C. lucida* var. *angustifolia*)

C. foetidissima

C. grandiflora
C. linearifolia (K)
C. lucida s.s.
C. macrocarpa ssp.
C. propinqua (?) (K)
C. repens
C. thamnoides (incl. *C. polymorpha*)
C. robusta
C. rotundifolia
C. spathulata ssp. *spathulata*
C. tenuicaulis
C. dodonaeifolia x *C. lucida* (?)

C. propinqua x *C. robusta*

Cotiana arborea

Corokia buddleioides (incl. *C. b.* var. *linearis*?)

Cyathodes sp. (*C. juniperina* agg.)

(lvs usually > 1cm x > 1mm, up to 1.5cm x 2.5mm)

Dracophyllum patens

Epactis pauciflora (incl. *E. p.* var. *sinclairii*)

Gaultheria antipoda

G. paniculata

G. antipoda x *G. paniculata*

Geniostoma rupestre var. *ligustrifolium*

Hebe macrocarpa var. *macrocarpa*

H. pubescens

H. stricta var. *stricta*

Helichrysum aggregatum var. *aggreg.*

H. lanceolatum (incl. *H. glom.* var. *maius*)

Ileostylus mactanthus

Kunzea ericoides agg.

Leptospermum scoparium

Leucopogon fasciculatus var.

L. fraseri s.s.

Melicope simplex

M. s. x *M. ternata* (As *M. mantellii*)

Melicytus micranthus (incl. *M. m.* var. *microphyllus*)

Myrsine divaricata (K)

Oleaia alba (K)

O. furfuracea (K)

O. rani var. *colorata*

O. solandri (K)

O. townsonii (incl. *O. furfuracea* var. *tubicunda* and *O. thomsonii*)

Phebalium nudum

Pinulea buxifolia

P. longifolia

P. prostrata (K)

P. tomentosa (K as *P. virgata*)

Pittosporum cornifolium

P. kirkii

Plagianthus divaricatus

Pomadouris ericifolia (K as *P. phyllicifolia*)

P. kumeraho

P. rugosa (Allan 1961)

Pseudopanax anomalus

Pseudowintera axillaris

P. colorata

Rhabdothamnus solandri

Solanum aviculare var. aviculare
Teucrium parvifolium (incl. T. p. var.
luxurians)

Thelipidea adamsii (Cheeseman 1881 and
A, as Loranthus adamsii)

Tupeia antarctica (K)

T. sigmatifolia

T. tannensis

Lycopodium carnovum

L. deuterodensum

L. laterale (incl. L. tamulosum?)

L. scariosum

L. varium (incl. L. billardierei and L.
novae-zelandicum)

L. volubile

Phylloglossum drummondii (A)

MONOCOT LIANES

Freyinetia baueriana ssp. banksii

Ripogonum scandens

FERNS

Adiantum aethiopicum (A)

A. cunninghamii

A. diaphanum

A. fulvum

A. hispidulum (incl. A. pubescens)

A. viridescens

Anarthropteris lanceolata

Arthropteris tenella (K as Polypodium
tenellum)

Asplenium bulbiferum

A. flaccidum

A. flabellifolium (K)

A. hookerianum

A. lamprophyllum

A. oblongifolium

A. obtusatum (K)

A. polyodon

A. terrestre ssp. terrestre

Azella filiculoides (A as A. tubra)

Blechnum chambersii

B. colensoi

B. discolor

B. filiforme

B. fluviatile agg.

DICOT LIANES

Calystegia tuguriorum (K as Convolvulus tug.)

C. sepium (K as Convolvulus sepium)

Clematis cunninghamii (K as C. parviflora)

C. foetida (K)

C. forsteri (K as C. colensoi; A as C.

hexasepala)

C. paniculata

Metrosideros albiflora

M. carminea

M. diffusa

M. fulgens

M. perforata

Muehlenbeckia australis

M. complexa

Parsonsia heterophylla

P. capsularis var.

Passiflora tetrandra (K)

Rubus australis

R. cissoides var. cissoides

R. schmidelioides (K as R. australis
var. schmidelioides)

Sicyos angulata (K)

PSILOPSIDS AND LYCOPODS

Tmesipteris elongata (incl. T. e. ssp. robusta)

T. lanceolata

- B. fraseri*
B. membranaceum
B. minus
B. nigrum \angle *B. procetum*
B. vulcanicum
B. sp. (unnamed) (common lowland sp.;
lower pinnae reduced in length)
- B. chambersii* \times *B. membranaceum*
Botrychium sp.
- Cheilanthes distans* (A as *Nothochlaena distans*)
C. humilis (K as *C. sieberi*)
Ctenopteris heterophylla
Cyathea cunninghamii
C. dealbata
C. medullaris
C. smithii
Dicksonia fibrosa
D. lanata (K)
D. squarrosa
Doodia media ssp. *media*
D. mollis (Parris 1972, as *D. caudata*)
Gleichenia dicarpa
G. microphylla
Grammitis billardiærei
G. ciliata
G. magellanica ssp. *nothofageti*
G. pseudociliata
Histiopteris incisa
Hymenophyllum armstrongii
H. bivalve (K)
H. cupressiforme
H. demissum
H. dilatatum
H. ferrugineum
- H. flabellatum*
H. flexuosum
H. lyallii
H. multifidum
H. rarum
H. revolutum
H. sanguinolentum agg.
H. scabrum
Hypolepis distans (Brownsey and
Chinnock, 1984)
H. lactea
H. rufo-barbata (Brownsey and
Chinnock, 1984)
Lastreopsis glabella
L. hispida
L. microsora ssp. *pontangulatis*
L. velutina (K as *Nephrodium velutina*)
Leptolepia novae-zelandiae (K as
Davallia novae-zelandiae)
Leptopteris hymenophylloides
Lindsaea trichomanoides
L. linearis
L. viridis
Loxsonia cunninghamii
Lygodium articulatum
Marattia salicina (A as *M. fraxinea*)
Paesia scaberula
Pellaea rotundifolia (K)
Phymatosorus pustulatus
P. novae-zelandiae
P. scandens
Pneumatopteris pennigera
Polystichum richardii
P. silvaticum (K as *Polypodium silvaticum*; Crookes 1963)
P. vestitum
Pteridium esculentum
Pteris comans auct. N.Z.
(K as *P. eridlicheriana*)
P. pendula

- P. tremula (K)
- Pyrosia elegnifolia
- Rumohra adiantiformis
- Schizaea bifida
- S. fistulosa
- Sticherus cunninghamii
- S. flabellatus (Cheeseman 1925 and Crookes 1963, as Gleichenia flabellata)
- Trichomanes elongatum
- T. endlicherianum
- T. reniforme
- T. strictum
- T. vanosum

- M. unifolia
- Orthoceras novae-zelandiae
- Pterostylis banksii
- P. graminea
- P. nana
- P. plumosa (A as P. squamata)
- P. trullifolia
- P. sp. (unnamed; included in P. graminea, as var. tuberculata, by Moore 1970)
- Thelymitra carnea
- T. longifolia
- T. pauciflora
- T. pulchella (A)

ORCHIDS

GRASSES

- Acianthus sinclairii
- A. viridis
- Adenochilus gracilis (K)
- Bulbophyllum pygmaeum
- Caladenia carnea agg. (A as C. minor)
- Chiloglottis cornuta
- Corybas acuminatus
- C. cheesemanii
- C. macranthus (K & A, as Corysanthes macr.)
- C. oblongus
- C. plicatilis s.s.
- C. trilobus (K and A, as Corysanthes tril.)
- Cyrtostylis oblonga (A)
- Dendrobium cunninghamii
- Drymoanthus adversus
- Earina autumnalis
- E. mucronata s.s.
- Gastrodia cunninghamii (A)
- Genoplesium pomilum
- Microtis parviflora

- Elymus multiflorus (K as Triticum multiflorum)
- Enarduroides (A as Gymnostichum gracile; Cheeseman 1925, as Asperella gracilis)
- E. sp. (E. rectisetus agg.) (K as Triticum scabrum)
- Chionochloa conspicua ssp. cunninghamii
- Cortaderia folvida
- C. toetoe
- Deyeuxia avenoides (incl. D. a. var. brachyantha)
- D. billardierei (K as Agrostis billardierei)
- D. sp. (D. quadrifida agg.) (lvs narrow)
- Dichelachne cincta
- D. micrantha (K as D. sciurea)
- Echinopogon ovatus (K)
- Hierochloa redolens (A)
- Isachne globosa
- Lachnagrostis sp. (K as Agrostis aenula)

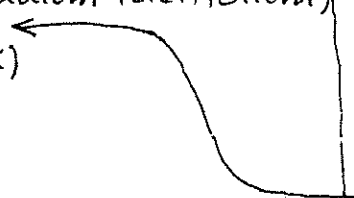
- Microlaena arenacea*
- M. polynoda* (K)
- M. stipoides*
- Oplismenus imbecillus*
- Poa anceps* ssp. *anceps*
- Rytidosperma gracile*
- R. unatode*
- R. viride*
- Spinifex sericeus* (K as *S. hirsutus*)
- Stipa stipoides* (K as *Dichelachne stipoides*)

- C. sp. (ii)* (unnamed; aff. *C. geminata*) (much larger than *C. geminata*; lvs up to 2.5 cm wide)
- Cyperus ustulatus*
- Desmoschoenus spiralis* (K)
- Eleocharis acuta*
- E. gracilis*
- Gahnia lacera*
- G. pauciflora*
- G. setifolia*
- G. xanthocarpa*

SEDGES

- Baumea juncea* (K as *Cladium junceum*)
- B. rubiginosa*
- B. tenax*
- B. teretifolia* (K as *Cladium teretifolium*)
- Carex breviculmis* (K)
- C. dissita* s.s.
- C. flagellifera*
- C. forsteri*
- C. gaudichaudiana* (K)
- C. inversa*
- C. lambertiana*
- C. maorica* (Hamlin 1957)
- C. ochtosaccus*
- C. pumila* (K)
- C. secta* (K as *C. virgata* var. *secta*)
- C. solandri*
- C. spinirostris*
- C. subdola* (Hamlin 1954)
- C. virgata*
- C. sp. (i)*

- Lepidosperma australe* (A)
- L. laterale* (A as *L. concava*)
- Machaerina sinclairii*
- Moreletia affinis*
- Schoenus apogon* (K as *S. brownii*; Cheseman 1925)
- S. brevifolius*
- S. maschalinus*
- S. tendo*
- Schoenoplectus pungens* (K as *Scirpus triquetus*)
- Bolboschoenus caldwellii* (Cook 1947, as *Scirpus caldwellii*)
- B. medianus* (Cook 1947, as *Scirpus medianus*)
- Isolepis cernua* (K as *I. riparia*)
- I. distigmata*
- I. inundata*
- I. nodosa*
- I. prolifer* (K)
- I. reticulata*
- Uncinia banksii*
- U. filiformis* (Thames district? - Hamlin 1959)
- U. gracilentia*
- U. rupestris* (incl. *U. angustifolia*)
- U. uncinata*
- U. zotavii*



RUSHES

- Juncus australis* (K as *J. vaginatus*; A)
- J. gregiflorus*
- J. maritimus* (K)
- J. pallidus*
- J. planifolius*
- Leptocarpus similis* (K as *L. simplex*)
- Luzula picta* s.s.

MONOCOT HERBS (OTHER THAN ORCHIDS, /

GRASSES, SEDGES, RUSHES)

- Arthropodium candidum* (K)
- A. cirratum* (K)
- Astelia banksii*
- A. fragrans*
- A. grandis* (K)
- A. solandri*
- A. trinervia*
- A. sp.* (unnamed; aff. *A. nervosa*)
- Collospermum hastatum*
- C. microspermum*
- Dianella nigra*
- Libertia grandiflora*
- L. ixioides* (K, Moore 1967)
- L. pulchella*
- Luzuriaga parviflora*
- Phormium cookianum*
- P. tenax* (K)
- Potamogeton suboblongus* (?) (A as *P. nataus*)
- Spartanium subglobosum* (A as *S. simplex*)
- Triglochin striata* (K as *T. triandra*)
- Typha orientalis*
- Zostera sp.* (K as *Z. marina*)

COMPOSITE HERBS

- Anaphalis kerriensis* s.s.
- Celmisia gracilentia* ssp. (*C. adamsii*)
- Centipeda sp.* (K as *Cotula minuta*)
- C. coronopifolia* (K)
- Gnaphalium gymnocephalum*
- G. involucreatum* (K)
- G. sphaericum*
- Lagenifera pumila* (K as *Lagenophora forsteri*)
- Leptinella dioica* ssp. *dioica* (Lloyd 1972, as *Cotula dioica* ssp. *dioica*)
- L. tenella* (Lloyd 1972 as *Cotula* mem. *bianacea*) (unnamed; aff. *Plotecalbum*)
- Pseudognaphalium sp.* (*Plotecalbum*)
- Raoulia tenuicaulis* (K)
- Senecio hispidulus*
- S. laetus* (K)
- S. minimus*
- S. quadridentatus* (K as *Erechtites quadridentata*)

DICOT HERBS (OTHER THAN COMPOSITES)

- Acaena ansetinifolia*
- Apium prostratum* ssp.
- Cardamine sp.* ("Narrow Petal" of Pritchard 1957)
- Callitriche muelleri* (K)
- Calystegia marginata* (K as *Convolvulus marginata*; Cheeseman 1925)
- C. soldanella*
- Centella uniflora*
- Chenopodium glaucum* var. *ambiguum* (K as *C. ambiguum*)
- Dactylanthus taylorii* (K as ? *Dactylanthus sp.*; Cheeseman 1925)
- Daucus glochidiatus* (K as *D. brachiatus*)
- Dichondra repens* (K)
- Disphyma australe* ssp. *australe*

Drosera binata
D. poltata ssp. *auriculata*
D. spathulata
Epilobium alsinoides (K)
E. billardierianum (K)
E. cinereum (K as *E. juuceum*)
E. hirtigerum (Raven and Raven, 1976)
E. nummulatifolium (K)
E. pallidiflorum
E. pubens (K)
E. rotundifolium
Euphorbia glauca (K)
Galium trilobum (A as *G. tenuicaule*)
G. (unnamed; aff. G. microphyllum) (K as *G. m.*)
G. Solanderi (Gardner 1984)
Gonocarpus incanus (Orchard 1975)
G. micranthus ssp. *micranthus*
Gratiola serrulata (A as *G. peruviana*)
Gunnera monoica (K)
Haloragis erecta ssp. *erecta*
Hydrocotyle dissecta
H. elongata
H. heteromaria
H. moschata (K, A)
H. novae-zeelandiae (A)
H. pterocarpa (A)
Hypericum japonicum agg.
Lepidium oleraceum (K)
Lilaeopsis sp. (A as *Ciantzia lineata*)
Lilium monogynum (K)
Lobelia anceps

9

Mimulus repens (A)
Myriophyllum propinquum (A as *M. variaefolium*)
M. triphyllum (A as *M. elatinooides*)
Nertera depressa (incl. *N. cummighanii*)
N. dichondrifolia s.s.
Oxalis exilis
O. magellanica
Parahebe diffusa ssp. (*P. catarractae* ssp. *lanceolata*)
Parietaria debilis (K, A)
Peperomia urvilleana
Plantago raoulii (K)
Polygonum salicifolium
(K as *P. minus* var. *decepiens*)
Pratia angulata agg.
Ranunculus amphitrichus (K as *R. rivularis*)
R. reflexus
Rorippa divaricata (K as *Cardaminis stylosa*)
R. palustris (K as *Nasturtium palustre*)
Rumex flexuosus (K)
Samolus repens (K)
Sarcocornia quinqueflora
Selliera radicans (K)
Stellaria decepiens (K as *S. parviflora*)
Urtica incisa
Viola filicaulis
Walilenbergia gracilis (K)

No. of species: 510.

Brownsey, P.J.; Chinnock, R.T. 1984: A taxonomic revision of the N.Z. species of Hypolepis. N.Z. J. Bot. 22: 43-80.

REFERENCES

Adams, J. 1884: On the botany of the Thames goldfields. Trans. N.Z. Inst. 16: 385-93.

Allan, H.H. 1961: "Flora of New Zealand". Government Printer, Wellington. Vol. 1. 1085 pp.

Cheeseman, T.F. 1881: Description of a new species of Loranthus. Trans. N.Z. Inst. 13: 296-7.

——— 1925: "Manual of the New Zealand flora". 2nd ed. (Ed. W.R.B. Oliver). Government Printer, Wellington. 1163 pp.

Cook, V.J. 1947: Descriptions of new species of Scirpus. Trans. R. Soc. N.Z. 76: 567-71.

Gardner, R.O.: Geranium solanderi & allies in N.Z. N.Z. J. Bot. 22: 127-34.

Crookes, M. 1963: "New Zealand Ferns (incorporating illustrations and original work by H.B. Dobbie)". Ed. 6. Whitcombe and Tombs. 408 pp.

Hawlin, B.G., 1954: Studies in New Zealand Carexes. 1. The Section Acutae. Trans. R. Soc. N.Z. 82: 49-64.

——— 1957: Studies in New Zealand Carexes. 2 & 3. Trans. Roy. Soc. N.Z. 84: 681-7.

——— 1959: A revision of the genus Uncinia (Cyperaceae-Caricoidae) in New Zealand. Dom. Mus. Bull. 19. 106 pp.

Kirk, T. 1870: Botany of Thames goldfields. Trans. N.Z. Inst. 2: 89-100.

Lloyd, D.G. 1972: A revision of the New Zealand, Subantarctic, and South American species of Cotula, Section Leptinella. N.Z. J. Bot. 10: 277-372.

Moore, L.B. 1967: The N.Z. species of Libertia (Iridaceae). N.Z. J. Bot. 5: 225-75.

——— 1970: Orchidaceae. pp. 102-67 in "Flora of N.Z." Govt. Pr. Vol. 2. 354 pp.

Nordenstam, B. 1978: Taxonomic studies in the tribe Senecioneae (Compositae). Opera Botanica 44: 1-84.

Oliver, W.R.B. 1929: A revision of the genus Dracophyllum. Trans. N.Z. Inst. 59: 678-714.

——— 1935: The genus Coprosma. Bishop Mus. Bull. 132: 207 pp.

Orchard, A.E. 1975: Taxonomic revisions in the family Malvaceae. 1. Bull. Auckland Inst. Mus. 10.

Parris, B.S. 1972: The genus Doodia R. Br. (Blechnaceae: Filicales) in New Zealand. N.Z. J. Bot. 10: 585-604.

Raven, P.H.; Raven, T.E. 1976: The genus Epilobium (Onagraceae) in Australasia: a systematic and evolutionary study. N.Z. D.S.I.R. Bull. 216.

Pritchard, G.G. 1957: Trans. Roy. Soc. N.Z. 85: 75-89.

Oliver, W.R.B. 1952: A revision of the genus Dracophyllum: Supplement. Trans. R. Soc. N.Z. 80: 1-17.

DOUBTFUL AND ERRONEOUS RECORDS NOT INCLUDED IN MAIN LIST

Record	Probable identity of plant on which record based
<i>Carex ternaria</i> (K)	
<i>Dracophyllum longifolium</i> var. (As Durvilleanum) <i>D. recurvum</i> (Oliver 1952) <i>D. strictum</i> (A, and Oliver 1929)	} <i>Dracophyllum patens</i>
<i>Gaultheria rupestris</i> (K, A)	<i>Gaultheria paniculata</i>
<i>Lagenifera petiolata</i> (K as <i>Lagenophora petiolata</i>)	
<i>Lepidothamnus laxifolius</i> var. (K as <i>Dactyidium laxifolium</i> var.)	<i>Lepidothamnus intermedius</i>
<i>Nothofagus fusca</i> (K, A) <i>Pomadouria edgerleyi</i> (K)	<i>Nothofagus truncata</i> <i>Pomadouria rugosa</i>
<i>Sophora tetraptera</i> (K)	<i>Sophora microphylla</i>
<i>Leptocarpus pusillus</i> (K as <i>Cotula petpusilla</i>)	
<i>Hebe salicifolia</i> (K as <i>Veronica salicifolia</i>)	<i>Hebe stricta</i> var. <i>stricta</i>
<i>Pimelea gnidia</i> (Cheeseman 1925)	<i>Pimelea buxifolia</i>
<i>Coprosma colensoi</i> x <i>C. foetidissima</i> (Oliver 1935, as <i>C. banksii</i> x <i>C. foetidissima</i>)	<i>Coprosma colensoi</i>
<i>D. Sinclairii</i> (K, and Oliver 1929 as <i>D. squarrosus</i>)	<i>Dracophyllum patens</i>