

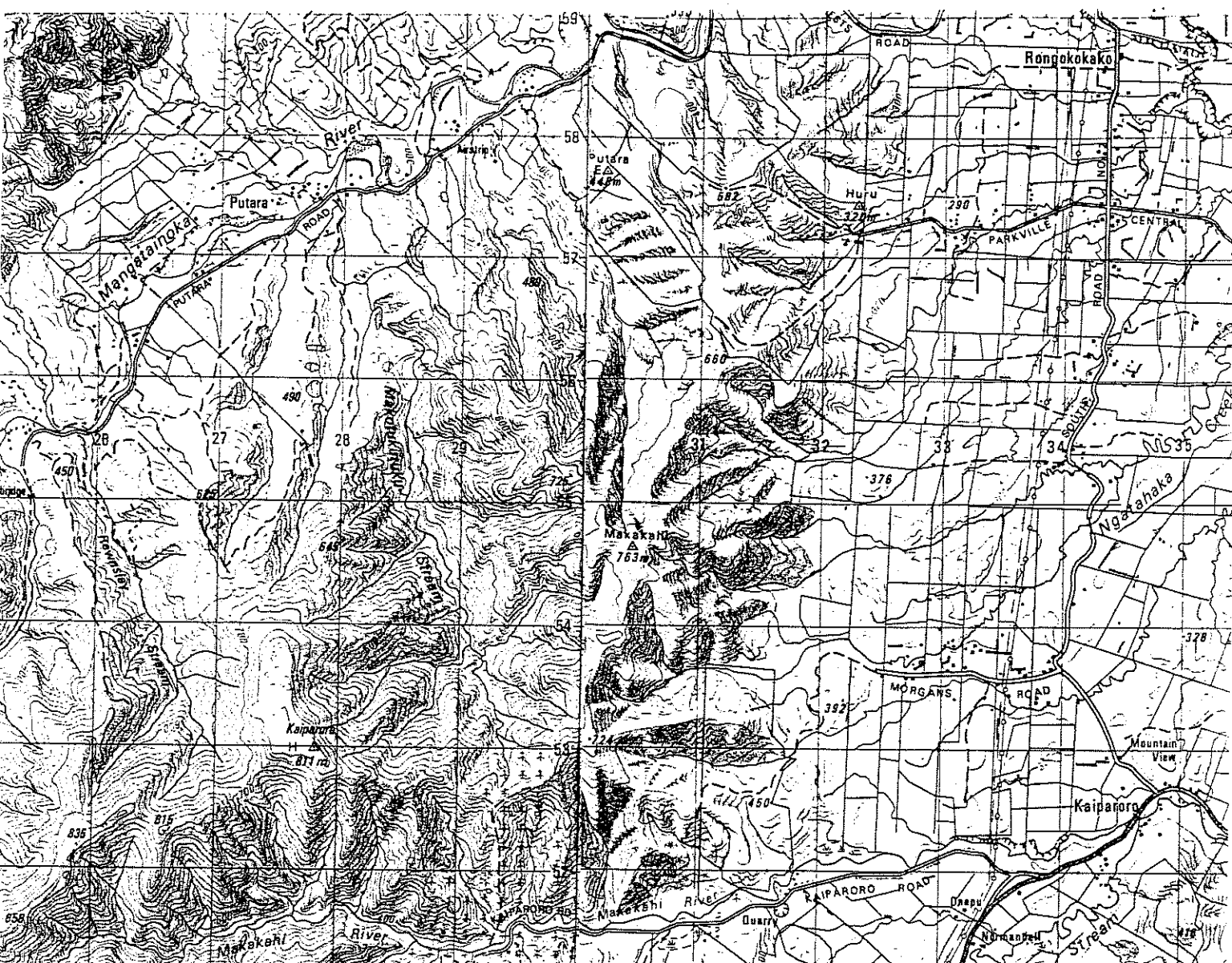
HIGHER PLANTS (GYMNOSPERMS, PSILOPSIDS,
LYCOPODS, FERNS, FLOWERING PLANTS) OF MT KAIPARORO¹
AND MT MAKAKAHI,² N. TARARUA RA., 300-811 M (1000-2660 FT)

NZMS 260

¹Grid ref. S 25 278530

²Grid ref. T 25 304547

A.P. Druce, Botany Division, D.S.I.R., Feb. 1969
(revised Aug. 1974, March 1975, July 1976, May 1977,
Sept. 1977, Dec. 1977, July 1978, May 1979, June 1980,
Feb. 1982, June 1985, June 1987, Oct. 1988, June 1990,
July 1991, July 1992)
(Based on observations 1954-1989)



INDIGENOUS PLANTSGYMNOSPERM TREES*Dactyloctenium aegyptium* (unc)*Dactyloctenium cupressinum**Halocarpus biflorus* (unc)*Phyllocladus* sp. (unnamed; aff. *P. alpinus*)
("lowland" ecotype of Wardle 1969)*Podocarpus hallii**Prumnopitys ferruginea**Nothofagus fusca**N. menziesii* (local)*Pennantia corymbosa**Pittosporum eugenioides**Pseudopanax arboreum* var. *arboreum**P. colensoi* s.s. (unc)*P. crassifolium**P. edgerleyi* (unc)*P. simplex* (incl. *P. s.* var. *sinclairii*)*Schefflera digitata**Weinmannia racemosa* var. *racemosa*MONOCOT TREES AND SHRUBS*Cordyline australis**C. banksii**C. indivisa* (unc)DICOT TREES*Aristotelia serrata**Baileya tawa**Carpodetus serratus**Elaeocarpus dentatus* (incl. *E. d.*
var. *obovatus*)*E. hookerianus**Fuchsia excorticata**Griselinia littoralis**G. lucida* (unc)*Hedyotis arborea**Knightia excelsa**Melicope lanceolata* (incl. *M. l.*
var. *latior*) (unc)*M. ramiflorus* ssp. *ramiflorus**Metrosideros robusta**Myrsine salicina**Nestegis cunninghamii* (unc)*N. lanceolata* (unc)DICOT SHRUBS*Alseuosmia pusilla**Brachyglottis repanda* s.s.*B. rotundifolia* var. (*B. elaeagnifolia*)*Cassinia leptophylla* var. *leptophylla**C. vauvilliersii**Coprosma colensoi* s.s.*C. foetidissima**C. grandifolia* (unc)*C. lucida* s.s. (unc)*C. thamnoides* (incl. *C. polymorpha*)*C. rigida* (unc)*C. robusta*

C.sp.(i.) (unnamed; included in *C. Myrsine divaricata* ss. *parviflora* by Oliver, 1935, and other) *Neomyrtus pedunculata* (If undersurface not minutely hairy *Oleama arborescens* as is usual in *C. parviflora*; droopes vs. unpigmented, occ. purplish red) *O. colensoi* var. *colensoi* *O. ilicifolia* (unc)

C.sp.(ii) (unnamed) (*C. parviflora* var. *dumosa* Allan 1961, non *C. parviflora* var. *dumosa* Cheeseman) *O. lacunosa* var. (*O. alpina*) (unc) *O. solandri* (unc) *O. vitigata* var. *vitigata* (incl. *O. v. ramuliflora*) (unc)

C. propinqua X *C. robusta* (unc) *Coriaria arborea* *Pentachondra pumila* *Dracophyllum longifolium* var. (incl. *D. filifolium* and *D. oliveri*) *Pimelea longifolia* var. *Pseudowintera axillaris* *P. colorata*

D. uniflorum (unc) *Solanum aviculare* var. *aviculare* *Gaultheria antipoda* *G. rupestris* (incl. *G. subcorymbosa*) (unc)

G. sp. (unnamed; included in *G. depressa*, as var. *novae-zelandiae*, by Franklin 1962) **MONOCOT LIANES** *Freyinetia baueriana* ssp. *banksii* (unc) *Ripogonum scandens*

G. antipoda X *G. rupestris* (unc) *G. a.* X *G. sp.* (unnamed) (unc) *G. rupestris* X *G. sp.* (unnamed) (unc) **DICOT LIANES**

Geniostoma rupestre var. *ligustrifolium* *Clematis paniculata* *Hebe odora* s.s. (unc) *Metrosideros diffusa* *H. stricta* var. *atkinsonii* *M. fulgens* *Helichrysum aggregatum* var. *aggregatum* (unc) *Muehlenbeckia australis* *Parsonsia heterophylla* *Kunzea ericoides* agg. *Rubus australis* (unc) *R. cissoides* var. *cissoides* *Leptospermum scoparium* *R. australis* X *R. cissoides* (unc) *Leucopogon fasciculatus* var.

PSILOPSIDS AND LYCOPODS

- Tmesipteris elongata* (incl. *T.e. ssp. robusta*) (unc)
- T. tannensis*
- Lycopodium fastigiatum*
- L. scariosum*
- L. varium* (incl. *L. billardierei* and *L. novae-zelandicum*)
- L. volubile*

- C. medullaris*
- C. smithii*
- Gleichenia dicarpa*
- Grammitis billardierei*
- G. ciliata* (unc)
- G. magellanica ssp. nothofagati*
- Histiopteris incisa*
- Hymenophyllum armstrongii* (unc)
- H. bivalve*
- H. demissum*
- H. dilatatum*
- H. fattuginum*
- H. flabellatum*
- H. multifidum*
- H. pulcherrimum* (unc)
- H. ratum*
- H. revolutum*
- H. sanguinolentum* agg.
- H. scabrum*
- Hypolepis tufo barbata*
- Lastreopsis glabella*
- L. hispida*
- Leptolepia novae-zelandiae* (unc)
- Leptopteris hymenophylloides*
- L. superba*
- L. hymenophylloides* X *L. superba*
- Lindsaea trichomanoides* (unc)
- Ophioglossum coriaceum* agg. (unc)
- Paesia scaberula*
- Pellaea rotundifolia* (unc)
- Phymatosorus pustulatus*
- P. scandens* (unc)
- Pneumatopteris pennigera*

FERNS

- Asplenium bulbiferum*
- A. flaccidum*
- A. hookerianum*
- A. oblongifolium* (unc)
- A. polyodon*
- Blechnum chambersii*
- B. colensoi*
- B. discolor*
- B. filiforme*
- B. fluviatile* agg.
- B. minus*
- B. nigrum*
- B. penna-marina*
- B. procerum*
- B. vulcanicum* (unc)
- B. sp. (i)* (unnamed) (common lowland sp.; lower pinnae reduced in length)
- B. sp. (ii)* (unnamed) (mountain sp.; lower pinnae not reduced in length)
- B. procerum* X *B. sp. (i)*
- Ctenopteris heterophylla*
- Cyathea colensoi* (unc)
- C. dealbata*

- H. dilatatum*
- H. fattuginum*
- H. flabellatum*
- H. multifidum*
- H. pulcherrimum* (unc)
- H. ratum*
- H. revolutum*
- H. sanguinolentum* agg.
- H. scabrum*
- Hypolepis tufo barbata*
- Lastreopsis glabella*
- L. hispida*
- Leptolepia novae-zelandiae* (unc)
- Leptopteris hymenophylloides*
- L. superba*
- L. hymenophylloides* X *L. superba*
- Lindsaea trichomanoides* (unc)
- Ophioglossum coriaceum* agg. (unc)
- Paesia scaberula*
- Pellaea rotundifolia* (unc)
- Phymatosorus pustulatus*
- P. scandens* (unc)
- Pneumatopteris pennigera*

Polystichum richardii
P. silvaticum (unc)
P. vestitum
Pteridium esculantum
Pteris tremula (unc)
Pyrosia eleagnifolia
Rumohra adiantiformis
Sticherus cunninghamii
Trichomanes colensoi (unc)
T. andlicherianum (unc)
T. reniforme
T. venosum

ORCHIDS

Aporostylis bifolia
Caladenia carnea agg. (unc)
Chiloglottis cornuta
Corybas oblongus (unc)
C. trilobus s.s. (unc)
Dendrobium cunninghamii
Eatinia autumnalis
E. mucronata s.s.
Gastrodia cunninghamii
Genoplesium nudum
Lyperanthus antarcticus (unc)
Microtis unifolia
Prasophyllum colensoi
Pterostylis banksii
P. venosa (unc)
Thelymitra cyanea
T. hatchii (unc)
T. longifolia

GRASSES

Agrostis personata
Chionochloa conspicua ssp.
 cunninghamii (unc)
C. flavescens s.s. (unc)
C. tubra ssp. *tubra*
C. flavescens X *C. tubra*
Cortaderia fulvida
C. toetoe (unc)
Deschampsia tenella (unc)
Dayaxia avenoides (incl. *D.a.*
 var. *brachyantha*) (unc)
D. aucklandica (unc)
Dichelachne erinita
D. inaequiglumis
Hierochloa redolens
Microlaena avenacea
M. stipoides
Rytidosperma clavatum
R. gracile
R. nigricans
R. unarode (unc)

SEDGES

Carex dipsacea var. *dipsacea* (unc)
C. dissita s.s.
C. sp. (Sect. *Acutae*)
Carpha alpina s.s.
Eleocharis acuta
E. gracilis (unc)
Gahnia pauciflora
Isolepis habra
I. pottsii (unc)

- Lepidosperma australe (unc)
- Oreobolus pectinatus
- O. strictus
- Schoenus maschalinus (unc)
- S. pauciflorus s.s. ("slender form" of Edgar 1970, p. 194)
- Uncinia astonii
- U. ferruginea
- U. filiformis
- U. gracilentata (unc)
- U. rupestris (incl. U. angustifolia)
- U. uncinata
- U. zotovii
- U. sp. (unnamed; aff. U. nervosa)
- (plants more slender than those of U. nervosa; see Edgar 1970, p. 231)

MONOCOT HERBS OTHER THAN ORCHIDS

GRASSES, SEDGES, RUSHES

- Arthropodium candidum (unc)
- Astelia fragrans
- A. linearis var. novae-zelandiae (unc)
- A. sp. (unnamed; aff. A. nervosa)
- (lvs not conspicuously white axially as in A. nervosa)
- A. solandri
- CollospERMUM microspermum
- Dianella nigra
- Lemna sp. (L. minor auct. N.Z.)
- Libertia ixioides (unc)
- L. pulchella
- Luzuriaga parviflora
- Phormium cookianum
- Potamogeton cheesemani (unc)

RUSHES

- Juncus antarcticus
- J. australis
- J. gregiflorus
- J. novae-zelandiae
- J. pallidus
- J. planifolius
- J. pusillus
- J. sarophorus
- J. novae-zelandiae x J. pusillus (unc)
- Luzula picta s.s.
- L. subclavata
- L. sp. (unnamed; included in L. picta, as var. limosa, by Edgar 1966)

COMPOSITE HERBS

- Abrotanella caespitosa
- Anaphalis kettensis s.s.
- A. sp. (Helichrysum bellidioides s.s. (unc)
- A. ketiensis X A. sp. (H. bellidioides)
- Celmisia spectabilis ssp. spectabilis (unc)
- C. sp. (unnamed; aff. C. gracilentata)
- Craspedia minor var. minor (incl. C. major)
- Gnaphalium audax (unc)
- G. delicatum (unc)
- G. limosum s.s. (unc)
- G. sp. (unnamed; aff. G. limosum)
- (lvs linear) (unc)

Helichtysum filicaule

Lagenifera pumila

Pseudognaphalium sp. (unnamed; aff. 1971)

P. luteoalbum (lvs mostly linear-spathulate to linear, acute)

florum, by Raven and Engelhorn

Euphrasia cuneata

Gentiana cf. matthewsii
sp. (unnamed; aff. G.)
Geranium (microphyllum)

Gonocarpus aggregatus

G. micranthus ssp. micranthus

Gunnera monoica

Raoulia glabra

R. tenuicaulis (incl. R. t. var. dimorpha and R. t. var. pusilla)

Senecio minimus

Hydrocotyle elongata

DICOT HERBS OTHER THAN COMPOSITES

Acaena anserinifolia

Cardamine sp. (i) (C. debilis agg.)

("Long Style" of Pritchard 1957)

C. sp. (ii) (C. debilis agg.) (cf. "Glossy

Leaf" of Pritchard 1957)

Centella uniflora

Dichondra sp. (cf. D. brevifolia)

Drosera binata (unc)

D. peltata ssp. aviculata

D. stenopetala

Epilobium alsinoides

E. brunnescens s.s.

E. cockayneanum

E. insulare (unc)

E. linnaeoides

E. nertatoides

E. nummularifolium

E. pedunculare s.s.

E. pernitens

E. pubens

E. rotundifolium

E. sp. (unnamed; included in E.

brunnescens, as ssp. minuti-

H. heteromeria (unc)

H. microphylla

H. moschata

Hypericum japonicum ass.

Jovellana repens

Liparophyllum gunnii (unc)

Nertera ciliata

N. depressa (incl. N. cunninghamii)

N. setulosa

Oreomyza sp. (unnamed; aff. O. ramosa)

Oxalis exilis

Parahebe diffusa ssp. diffusa

Plantago sp. (cf. P. novae-zelandiae)

Pratia angulata agg.

Ranunculus reflexus

R. verticillatus (unc)

Stellaria decipiens (incl. S. parviflora)

Urtica incisa

Viola filicaulis

ADVENTIVE PLANTS IN SHRUB-TUSsock LAND

GRASSES

Agrostis capillaris
Anthoxanthum odoratum
Holcus lanatus (unc)

SEDGES

Carex demissa (unc)

RUSHES

Juncus articulatus
J. effusus

DICOT HERBS

Epilobium sp. (unc)
Hypochoeris radicata
Leontodon taraxacoides (unc)

ERRONEOUS RECORDS

Astelia nervosa (Druce 1957, as *A. cockaynei*) = *A.* sp. (unnamed)
Calmisia gracilentia (Zotov et al., 1938) = *C.* sp. (unnamed)
C. graminifolia (Druce 1957) = *C.* sp. (unnamed)
Chionochloa rigida (Druce 1957, as *Danthonia rigida*) = *C. tubra*
Coprosma parviflora (Druce 1957) = *C.* sp. (unnamed)
Dichondra repens (Druce 1957) = *D.* sp. (cf. *D. brevifolia*)
Gaultheria depressa (Druce 1957) = *G.* sp. (unnamed)
Hebe salicifolia (Druce 1957) = *H. stricta*
Oreomyza colensoi (Druce 1957) = *O.* sp. (unnamed)
Pimelea gnidia (Druce 1957) = *P. longifolia*
Uncinia nervosa (Druce 1957) = *U.* sp. (unnamed)

No. of indigenous spp. : 301.

No. of adventive spp. (in
shrub-tussock land
above forest) : 9.