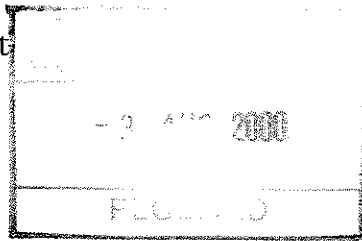


On bible ✓

RAP 31 Eastern Hawkesbay Ecological District "Pukewhinau Trig"

owners D.M. and J.H. Henricksen, RD4, Dannevirke.



Site visit 7 December 1999
Aalbert Rebergen
Department of Conservation
Wairarapa Area

The forest is dominated by tawa (south side) and totara (north side), with an understorey of kawakawa, supplejack and tree ferns. The ground is covered in leaf litter, kawakawa seedlings and many ferns, especially *Asplenium bulbiferum*, *Leptopteris hymenophylloides* and *Blechnum filiforme* (see also Maxwell et al. 1993). The forest has some unusual/significant plant species including *Pittosporum divaricatum*, *Olearia solandrii*, *Olearia virgata*, *Lophomyrtus bullata*, *Prumnopitys ferruginea* and *Fuchsia perscandens*.

I observed NZ pigeons (including courtship) and tuis during the site visit, and also watched a wild cat.

Mr Henricksen and I drove to the top of a hill over looking the forest in a northerly direction (see attached photo). I then walked down hill, along and through the forest for a couple of hours, and made the following (brief) list of plant species.

The owner has indicated that he is keen to legally protect the forest block (minus an area for shelter to his stock). "Pukewhinau trig bush" is the last significant block of native forest left in a totally cleared area between SH 52 and the Puketoi Range (see also attached photo) and as such, and being a RAP, it is important to be fully protected.

Plant list (7 december 1999 - brief search):

Trees, shrubs and climbers only

<i>Beilschiedia tawa</i>	tawa
<i>Brachyglottis repanda</i>	rangiora
<i>Carpodetus serratus</i>	putaputaweta
<i>Coprosma areolata</i>	
<i>C. crassifolia</i>	
<i>C. propinqua</i>	
<i>C. rhamnoides</i>	
<i>C. robusta</i>	
<i>C. rotundifolia</i>	
<i>Coryline australis</i>	cabbage tree
<i>Cyatodes juniperina</i>	
<i>Dacrydium cupressinum</i>	rimu
<i>Elaeocarpus hookerianus</i>	pokaka
<i>Fuchsia excorticata</i>	
<i>F. perscandens</i>	
<i>Geniostoma rupestre</i>	hangehange
<i>Griselinia lucida</i>	
<i>Hedycarya arborea</i>	pigeonwood
<i>Helychrisum lanceolatum</i>	
<i>Hoheria sextylosa</i>	facebark
<i>Knightia excelsa</i>	rewarewa

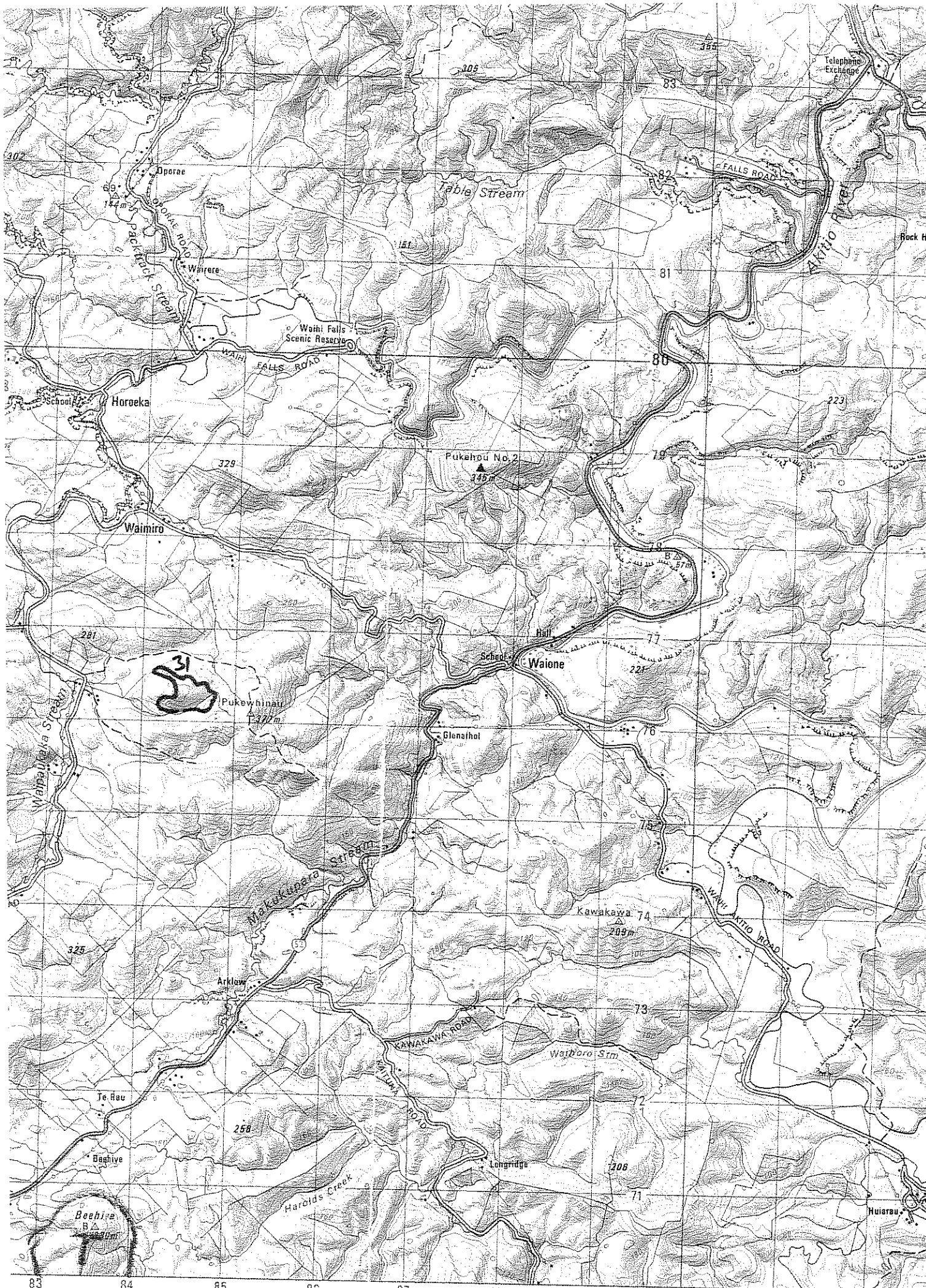
<i>Kunzea ericoides</i>	kanuka
<i>Laurelia novae-zelandiae</i>	pukatea
<i>Leptospermum scoparium</i>	manuka
<i>Leucopogon fasciculatus</i>	
<i>Lophomyrtus bullata</i>	
<i>L. obcordata</i>	
<i>Macropiper excelsum</i>	kawakawa
<i>Melicytus ramiflorus</i>	mahoe
<i>Myrsine australis</i>	mapou
<i>Nestegis cunninghamii</i>	black maire
<i>Olearia solandrii</i>	
<i>O. virgata</i>	
<i>Permantia corymbosa</i>	kaikomako
<i>Pittosporum divaricata</i>	
<i>P. eugenioides</i>	
<i>P. tenuifolium</i>	
<i>Podocarpus totara</i>	totara
<i>Prumnopitys ferruginea</i>	miro
<i>P. taxifolia</i>	matai
<i>Pseudopanax arboreus</i>	five finger
<i>P. crassifolius</i>	lancewood
<i>Rakaua anomalus</i>	
<i>Schefflera digitata</i>	pate
<i>Streblus heterophyllus</i>	

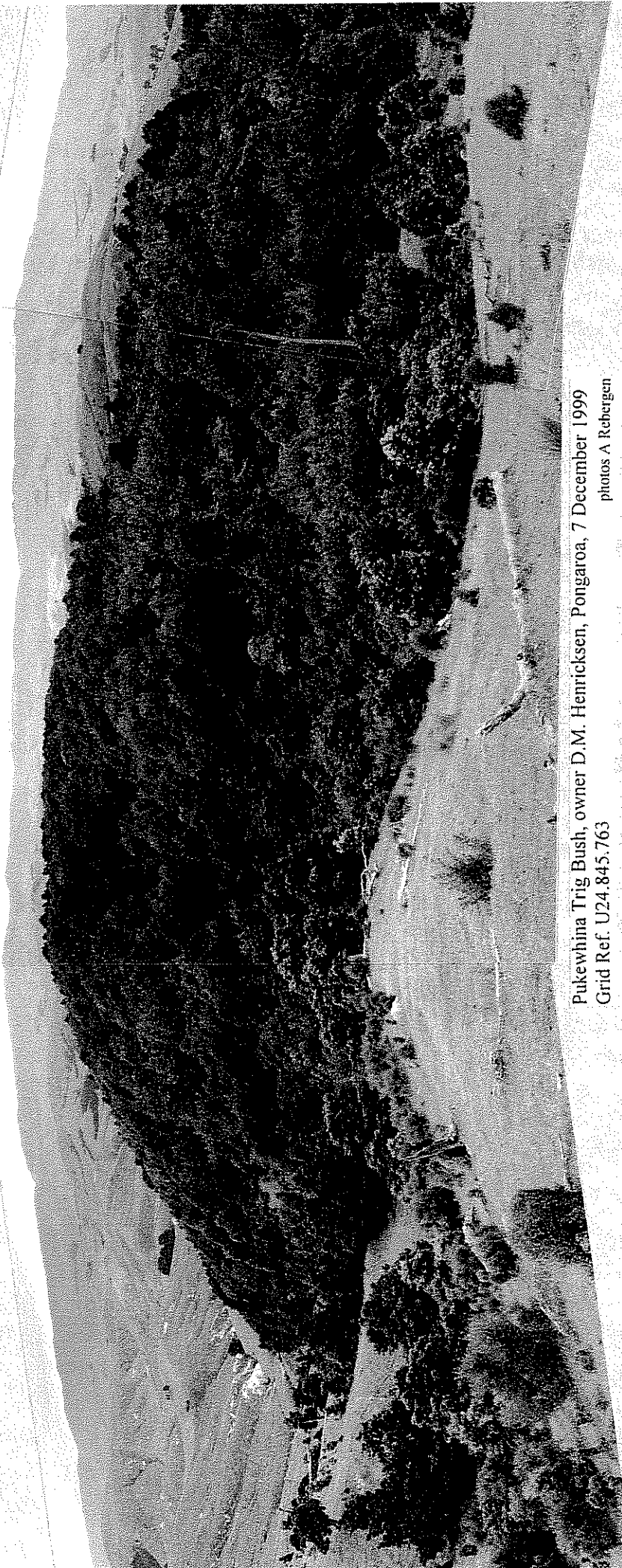
climbers

<i>Clematis paniculata</i>	
<i>Metrosideros colensoi</i>	
<i>M. diffusa</i>	
<i>M. perforata</i>	
<i>Muehlenbeckia australis</i>	
<i>M. complexa</i>	
<i>Parsonia</i> sp.	
<i>Passiflora tetrandra</i>	kohia
<i>Ripogonum scandens</i>	supplejack

birds

tui
 NZ pigeon
 grey warbler
 harrier





Pukewhina Trig Bush, owner D.M. Hennricksen, Pongaroa, 7 December 1999
Grid Ref. U24.845.763

photos A Rebergen